



Von Wolfe

The Space In Between

OPENING

SEPTEMBER 4, 2025

EXHIBITION

from SEPTEMBER 4 to October 18, 2025

LOCATION

AVENUE LOUISE 430 - 1050 BRUSSELS

MARUANI MERCIER

Von Wolfe

The Space In Between

> WATCH THE VIDEO

Portraying figures in restrained interiors or expansive landscapes, the works in *The Space In Between* evade attribution to a fixed space and time. The works are developed in collaboration with artificial intelligence, but not as mere tools of image generation. Instead, Von Wolfe treats the AI as an errant interlocutor - producing a flood of visual propositions, outliers, and uncanny hybrids. From this visual delirium, the artist isolates moments of particular psychic intensity, reworking them by hand in oil with classical precision. What results is a new kind of mythic realism - one that emerges from the machine's subconscious and the artist's instinctual logic.

Compositional elements surrounding the figures, such as toy trains, houses or pearls stand out for their specificity and alluring strangeness, yet remain paradoxically resistant to interpretation. Alluding to a narrative through meticulously detailed forms, each painting hovers over the boundary between the realist and the magical, conjuring the space of profound psychological tension. As the artist notes, "I'm interested in *The Space In Between* things. It doesn't matter which era the objects in the paintings come from, they could be a contemporary jet or a bird cage. What is important to me is that they are not symbols and this frame of reference that they give shouldn't be too fixed, they don't have a fixed meaning."

Responding to one another through a harmonised palette, the paintings in *The Space In Between* construct the vision of a world that subtly deviates from the Newtonian sense of physical space. In *Golden Blaze*, the figure casts a shadow that appears distanced, as if animated by a distinct presence. She is leaning precariously above a miniature house on fire, its flames abstracted into an almost improbable stillness. By intermingling passages of luminous precision with discreet distortions of the laws of physics, Von Wolfe transforms the composition into a psychological realm, a space of personal interiority and reflection.

In *Secret Journey*, the protagonist turns elegantly to meet our gaze, her presence and power underscored by the low horizon line evocative of classical portraiture. Her expression of surprise or address, lit at a sharp angle against the velvet dark texture of the empty room, alludes to the sense of psychic tension. The toy train on a chain, seemingly advancing along an incomplete track, emits smoke – a scene of an enigmatic push and pull, frozen in a poignant compositional equilibrium.

Operating in the space between intuitive human discernment and a cutting-edge technology, between creating and finding an image amid the echoes of human knowledge, the artist considers each medium in its own right, distinct, yet harmoniously interconnected. As Von Wolfe explains, "I see the two media as not hierarchical – for me, they're more like a voice and an echo, or a body and a shadow. I wouldn't place somehow the shadow in a lesser place because it doesn't have the physicality of the body, nor the echo in some way as the less beautiful, powerful instrument than the voice."



Golden Blaze, 2025

oil on canvas
signed and dated
120 x 120 cm | 47 x 47 in
framed: 122.6 x 122.6 cm





Secret Journey, 2025

oil on canvas
signed and dated
180 x 180 cm | 71 x 71 in
framed: 182.6 x 182.6 cm





The Gravity of Grace, 2025

oil on canvas

signed and dated

180 x 180 cm | 71 x 71 in

framed: 182.6 x 182.6 cm







**Bound by Steam and Silence,
2025**

oil on canvas

signed and dated

180 x 180 cm | 71 x 71 in

framed: 182.6 x 182.6 cm



In the Deep Blue Quiet, 2025

oil on canvas

signed and dated

60 x 60 cm | 24 x 24 in

framed: 62.6 x 62.6 cm





Gloria, 2025

oil on canvas
signed and dated
90 x 90 cm | 35 x 35 in
framed: 92.6 x 92.6 cm







A Room of Her Own, 2025

oil on canvas
signed and dated
65 x 65 cm | 25.6 x 24.6 in
framed: 67.6 x 67.6 cm



The Curtains Edge, 2025

oil on canvas

signed and dated

45 x 45 cm | 17.7 x 17.7 in

framed: 47.6 x 47.6 cm



Sail Upon the Deep, 2025

oil on canvas
signed and dated
65 x 65 cm | 25.6 x 25.6 in
framed: 67.6 x 67.6 cm



The Stillness Beneath, 2025

oil on canvas
signed and dated
65 x 65 cm | 25.6 x 25.6 in
framed: 67.6 x 67.6 cm



Night and Day, 2025

oil on canvas

signed and dated

145 x 111 cm | 57 x 44 in

framed: 147.6 x 113.6 cm





Von Wolfe is a British artist based in London whose work primarily examines themes of identity, intimacy, psychological depth and power dynamics, offering nuanced reflections on universal experience. The artworks often highlight the tension between control and autonomy, illuminating how unseen societal, technological, and psychological forces influence and shape individual agency.

Von Wolfe's process embodies the seamless interplay between the artist's practice as an oil painter and the forefront of technological innovation. Striking a balance between intuitive human discernment and a cutting-edge node-based system using diffusion models. The artist navigates the boundary between digital and tactile realms - through a process of adaptation and reinterpretation, he takes meticulously curated artworks, skilfully rendering them in oil on canvas, ensuring each medium stands in its own right, yet is harmoniously interconnected.



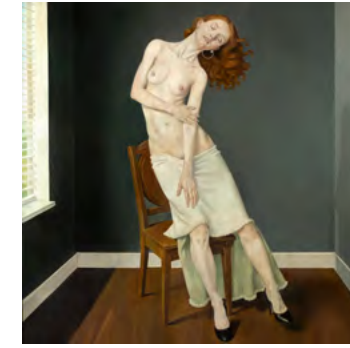
Golden Blaze, 2025

oil on canvas
signed and dated
120 x 120 cm | 47 x 47 in
framed: 122.6 x 122.6 cm



Secret Journey, 2025

oil on canvas
signed and dated
180 x 180 cm | 71 x 71 in
framed: 182.6 x 182.6 cm



The Gravity of Grace, 2025

oil on canvas
signed and dated
180 x 180 cm | 71 x 71 in
framed: 182.6 x 182.6 cm



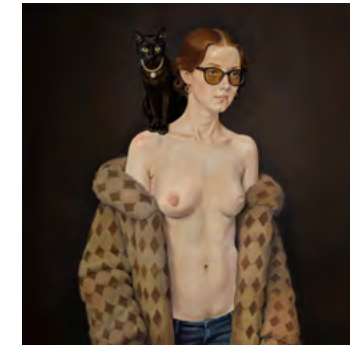
Bound by Steam and Silence,
2025

oil on canvas
signed and dated
180 x 180 cm | 71 x 71 in
framed: 182.6 x 182.6 cm



In the Deep Blue Quiet, 2025

oil on canvas
signed and dated
60 x 60 cm | 24 x 24 in
framed: 62.6 x 62.6 cm



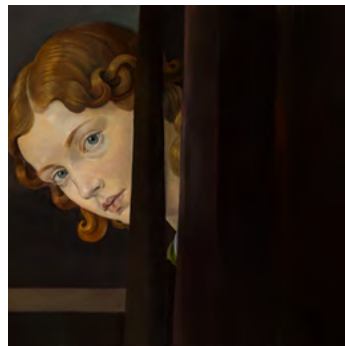
Gloria, 2025

oil on canvas
signed and dated
90 x 90 cm | 35 x 35 in
framed: 92.6 x 92.6 cm



A Room of Her Own, 2025

oil on canvas
signed and dated
65 x 65 cm | 25.6 x 25.6 in
framed: 67.6 x 67.6 cm



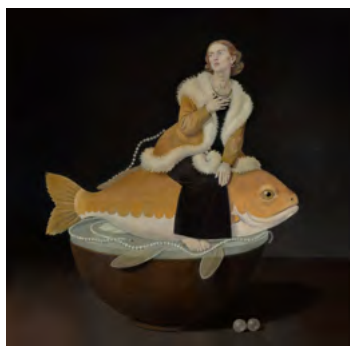
The Curtains Edge, 2025

oil on canvas
signed and dated
45 x 45 cm | 17.7 x 17.7 in
framed: 47.6 x 47.6 cm



Sail Upon the Deep, 2025

oil on canvas
signed and dated
65 x 65 cm | 25.6 x 25.6 in
framed: 67.6 x 67.6 cm



The Stillness Beneath, 2025

oil on canvas
signed and dated
65 x 65 cm | 25.6 x 25.6 in
framed: 67.6 x 67.6 cm



Night and Day, 2025

oil on canvas
signed and dated
145 x 111 cm | 57 x 44 in
framed: 147.6 x 113.6 cm

VON WOLFE

Born in 1966 in United Kingdom
Based in London, UK

EDUCATION

1989 BA Philosophy, University of York, York, United Kingdom

MUSEUM EXHIBITIONS

2025 Kaohsiung Museum of Fine Arts, Taiwan
2018 Processions of Orpheus, Jewish Museum and Tolerance Center, Moscow
2020 Inspiration: Contemporary and the Classics, Ateneum Museum, Helsinki
 Inspiration: Iconic Works, National Museum, Stockholm
2017 Doing Identity, Kunst Museum, Bochum
 Proof of Life, Weserburg Museum, Bremen
2016 Persona, Musée Quai Branly, Paris
2012 Babel, Beaux Arts de Lille, Lille

SOLO AND TWO-PERSON EXHIBITIONS

2025 The Space In Between, MARUANI MERCIER Gallery, Brussels
2024 Oracle, Richard Heller Gallery, Los Angeles
2023 Odyssey, 212 Festival, Istanbul
2018 The School of Night, the Saatchi Gallery, London
 Processions of Orpheus, Jewish Museum and Tolerance Center, Moscow
2016 L’Oeuvre, House of the Nobleman, London
 Meta-History, Riflemaker, London
2015 Wolfe von Lenkiewicz: A Retrospective, Galerie Michael Haas / Mark Sanders Art Consultancy
 Ltd, Berlin
 Delirious Picasso, House of the Nobleman/Mark Sanders Art Consultancy Ltd, Academy
 Mansion, New York
2014 Algebra: The Reunion of Broken Parts, House of the Nobleman / Mark Sanders Art Consultancy
 Ltd, London
 Wolfe von Lenkiewicz: Paintings & Drawings, Galerie MIRO, Prague
 Snow White and the Knights of Schwangau, Riflemaker, London
2013 The Raft of the Medusa, All Visual Arts, London
2012 Hieronymus Bosch, All Visual Arts, London
2011 The Beast and the Sovereign, Galerie Michael Haas, Berlin
 Liberation: Their Story Begins, Sebastian Guinness Gallery, Dublin, Ireland
 I Have an Excellent Idea... Let’s Change the Subject, All Visual Arts, London
 Victory Over the Sum, Triumph Gallery, Moscow
2009 The Descent of Man, All Visual Arts, London
2008 Nu-Trinity, Simon Dickinson, London
2007 Mutagenesis, Mimmo Scognamiglio Contemporary Art, Naples
 Mutagenesis, Paradise Row, London
 Emblematic Psychosis, Ingalls & Associates, Miami
2001 The Park, T1+2 Artspace, London
2000 Hangman, T1+2 Artspace, London

SELECTED GROUP EXHIBITIONS

2024 Seeing Red, Phillips Berkeley Square, London
2023 «AND QUIETLY THE NIGHT ARRIVES...», Steinhäuser Gallery, ZOYA Museum, Modra
 FEMME F(R)ICTION, C1760, Academy Mansion, New York
2022 Once Upon a Time..., Flora Fairbairn and Co, Chiltern St London, UK
2021 Carbon, Platform Earth, Frieze London, UK
 (HE)ART STORIES, Gallifet Art Center, Aix-en-Provence, France
2020 Inspiration: Contemporary and the Classics, Ateneum Museum, Helsinki
 Cranach: Artist and Innovator, Compton Verney Art Gallery, Warwickshire, UK
 Inspiration: Iconic Works, National Museum, Stockholm
2019 Dangerous Beauty, Colnaghi Gallery, London

 Homage to Leonardo, Chateau du Rivau, Loire Valley, France
2017 Doing Identity, Kunst Museum, Bochum
 Strange Beauty, Beck & Eggeling, Dusseldorf
 Proof of Life, Weserburg Museum, Bremen
2016 Forever, Bubox, Kortrijk, Belgium
 Persona, Musée Quai Branly, Paris
2015 Picasso In Contemporary Art, Wexner Center for the Arts, Columbus, Ohio
 Picasso In Contemporary Art, Deichtorhallen, Hamburg
 The Remarkable Lightness of Being, Aeroplastics Contemporary, Brussels
2014 Art Basel, Galerie Michael Haas, Basel
2013 Wonderful: Humboldt, Krokodil & Polke, Me Collectors Room, Berlin
 Viewing Room, All Visual Arts, London
 Between The Lines: A Group Drawing Show, All Visual Arts, London
2012 Memories of the Future, La Maison Rouge, Paris
 Metamorphosis, All Visual Arts, London
 Babel, Beaux Arts de Lille, Lille
 Everywhere and Nowhere, Villa Jauss, Obersdorf
2011 The House of the Nobleman, London
 Zwei Sammler, Deichtorhallen, Hamburg
2010 Vanitas: The Transience of Earthly Pleasures, All Visual Arts, London
 The House of the Nobleman, London
2009 The Age of the Marvellous, All Visual Arts, London
 The Embassy, 20 Hoxton Square Projects, London
2007 Avatar of Sacred Discontent, T1+2 Gallery, London
 Avatar of Sacred Discontent, Port Eliot LitFest, St Germans
2006 New Gothic, Tate Britain, London
 End of Civilization, Port Eliot Castle, St Germans
 Great Eastern Hotel, Kristy Stubbs Gallery, London
2005 Go Between, Magazine 4, Kunstverein, Bregenz
 W.P.S.1 MOMA Radio, Venice Biennale
 Redux Gallery screening of Get Newton and Otto Muehl film interview
 Chanel 5 TV, screening of The Park
 Commission for Arts Council to build the sculpture Lusus Naturae
 The Horse Hospital, screening of Desum
2004 Port Elliot Literary Festival Film Tent, screening of Desum
 Redux Gallery, screening of Desum
 ICA, London, screening of Desum
 Tank TV, ICA Media Room, exhibition screening of Scopophobia
2003 World’s First Congress of Fork Lift Trucks, Atlantis Gallery, London
2002 100,000 Newspapers: Gustav Metzger, Stewart Home, Wolfe von Lenkiewicz, T1+2 Artspace, London
1999 The Constant of Variation, T1+2 Artspace, London
2010 Vanitas: The Transience of Earthly Pleasures, All Visual Arts, London
 The House of the Nobleman, London
2009 The Age of the Marvellous, All Visual Arts, London
 The Embassy, 20 Hoxton Square Projects, London
2007 Avatar of Sacred Discontent, T1+2 Gallery, London
 Avatar of Sacred Discontent, Port Eliot LitFest, St Germans
2006 New Gothic, Tate Britain, London
 End of Civilization, Port Eliot Castle, St Germans
 Great Eastern Hotel, Kristy Stubbs Gallery, London
2005 Go Between, Magazine 4, Kunstverein, Bregenz
 W.P.S.1 MOMA Radio, Venice Biennale
 Redux Gallery screening of Get Newton and Otto Muehl film interview
 Chanel 5 TV, screening of The Park
 Commission for Arts Council to build the sculpture Lusus Naturae
 The Horse Hospital, screening of Desum
2004 Port Elliot Literary Festival Film Tent, screening of Desum
 Redux Gallery, screening of Desum
 ICA, London, screening of Desum
 Tank TV, ICA Media Room, exhibition screening of Scopophobia
2003 World’s First Congress of Fork Lift Trucks, Atlantis Gallery, London
2002 100,000 Newspapers: Gustav Metzger, Stewart Home, Wolfe von Lenkiewicz, T1+2 Artspace, London
1999 The Constant of Variation, T1+2 Artspace, London



BRUSSELS



KNOKKE



KNOKKE



ZAVENTEM

Founded in 1995, MARUANI MERCIER represents twenty three contemporary artists alongside its programme of museum quality historical exhibitions whilst continuing to build on the legacy of a number of renowned estates. Showing established artists alongside young and emerging new talent, the gallery promotes an artistic dialogue between different generations. It also contributes to new scholarship across its programmes by inviting prominent art historians and curators to collaborate on its exhibition catalogues and artist texts. Many of the gallery's artists participate in international exhibitions and are today placed in some of the most important museums and private collections around the world.

Initially MARUANI MERCIER's primary programme focused on celebrated American artists from the 1980s who, working within the medium of painting and sculpture, sought to reflect the aesthetic and social concerns of their time. Including; Ross Bleckner, Francesco Clemente, Ron Gorchov, Peter Halley, Jonathan Lasker, and Sue Williams. Over the years, the gallery looked to a new generation of artists who, working within different media, also addressed topical subjects relating to history, politics, the environment, and questions of identity and authorship. Amongst these, Radcliffe Bailey, Esiri Erheriene-Essi and Hank Willis Thomas examine topics surrounding Black history and culture whilst Lyle Ahston Harris looks at societal constructs of sexuality and race. Jaclyn Conley's nostalgic paintings present a poignant rumination on the social and political concerns of American life, whilst Tony Matelli confronts issues of isolation and impermanence with humour and irony.

In 2001, MARUANI MERCIER opened an additional gallery in the historic art town Knokke, followed by a 15,000 sq ft exhibition space and artist residency in Zaventem called THE WAREHOUSE in 2018. This expansion heralded a vanguard of young talent from West Africa including Cornelius Annor, Kwesi Botchway, and Johnson Eziefula, who have participated in the residency program. Their inclusion in the gallery's already versatile program ensures further engagement with the ever-changing canon of art history.

MARUANI MERCIER

| Brussels - Louise

Avenue Louise 430
1050 Brussels
Belgium

| Knokke - Kustlaan

Kustlaan 90
8300 Knokke
Belgium

| Knokke - Zeedijk

Zeedijk 759
8300 Knokke
Belgium

| Zaventem - The Warehouse

Lambroekstraat 5
1930 Zaventem
Belgium

General inquiries:

+32 512 50 10
desk@maruanimercier.com

Sales inquiries:

+32 473 977 236
serge@maruanimercier.com